

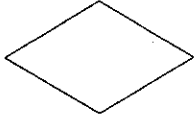

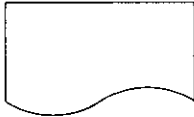
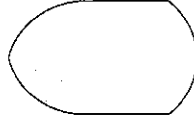

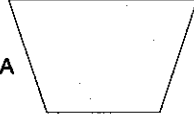

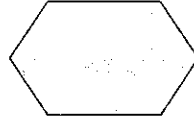

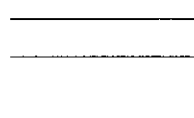
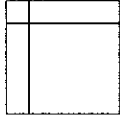
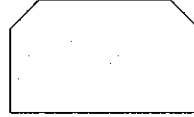
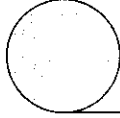
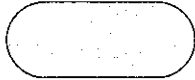
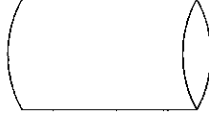
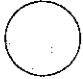
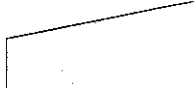

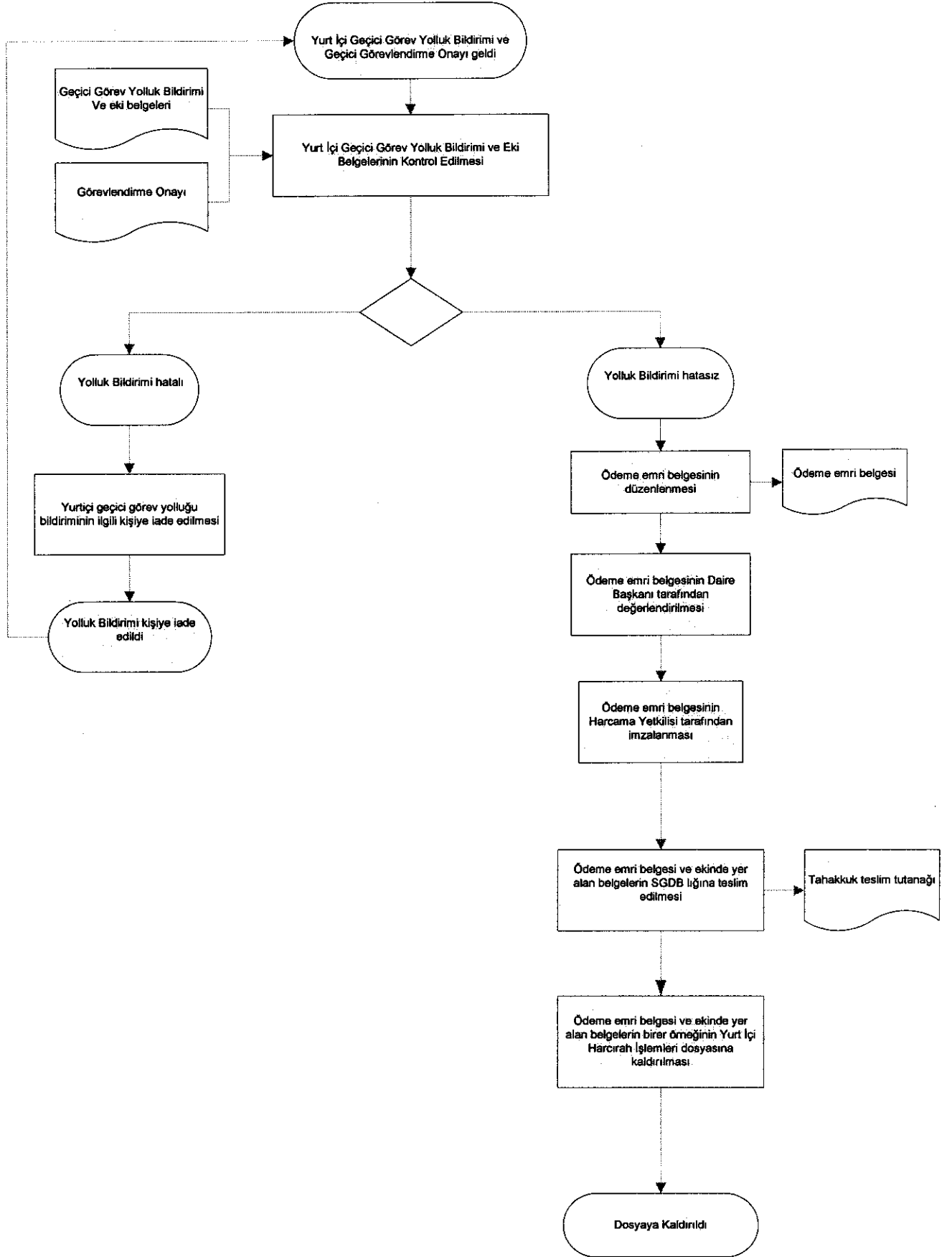


ANKARA ÜNİVERSİTESİ PERSONEL DAİRE BAŞKANLIĞI
İŞ AKIŞ ŞEMASI SEMBOLLERİ

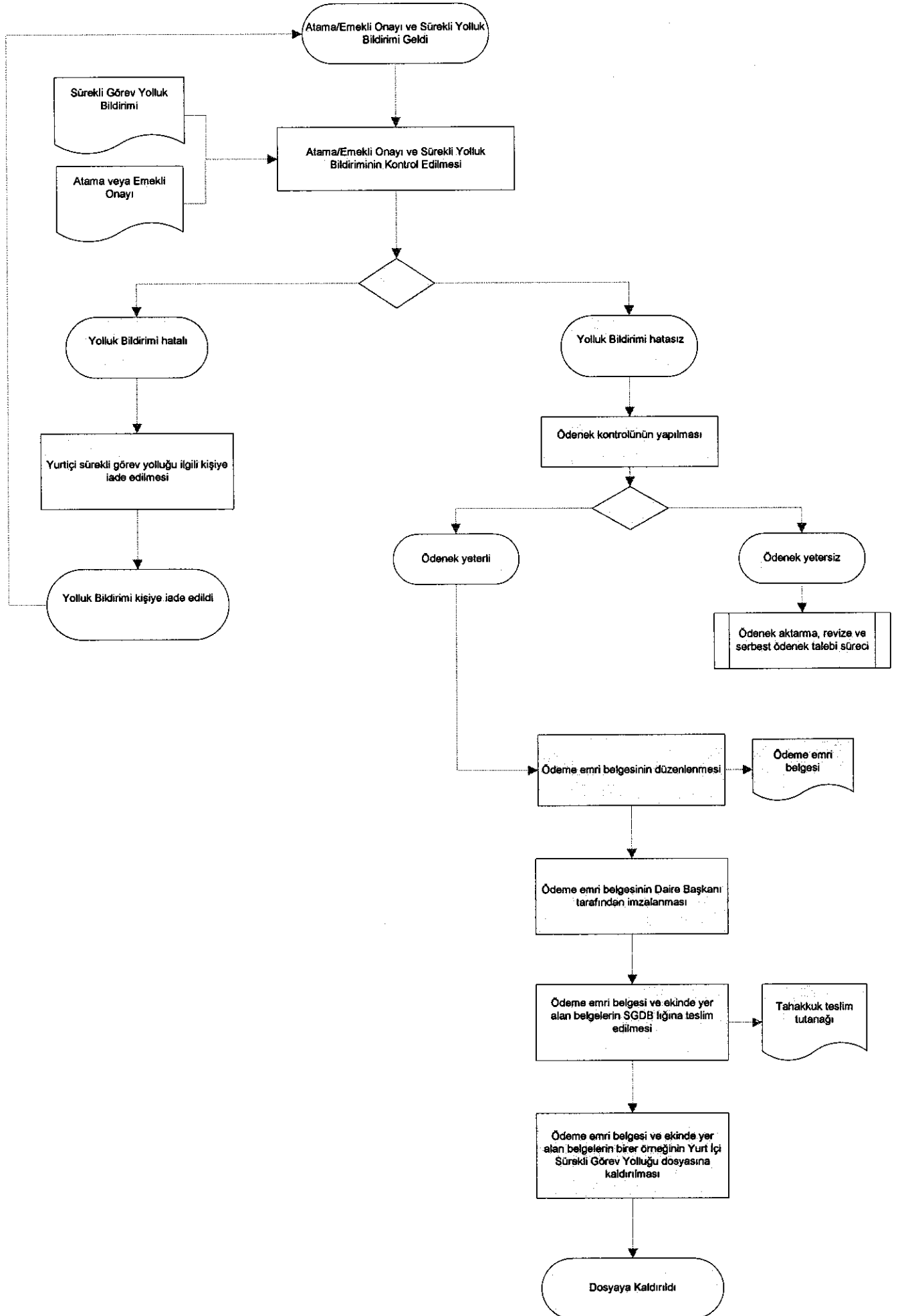
SÜREÇ		KART	
KARAR		KAĞIT ŞERİT	
BELGE		EKRAN	
VERİ		MANUEL ÇALIŞMA	
ÖNCEDEN TANIMLANMIŞ VERİ		HAZIRLIK	
SAKLANAN VERİ		PARALEL MOD	
DAHİLİ DEPOLAMA		DÖNGÜ SINIRI	
SIRALI VERİ		SONLANDIRICI	
DOĞRUDAN VERİ		SAYFA REFERANSI AÇ	
ELLE GİRİŞ		SAYFA REFERANSINI KAPAT	

ANKARA ÜNİVERSİTESİ PERSONEL DAİRE BAŞKANLIĞI
YURT İÇİ HARCIRAH İŞLEMLERİ



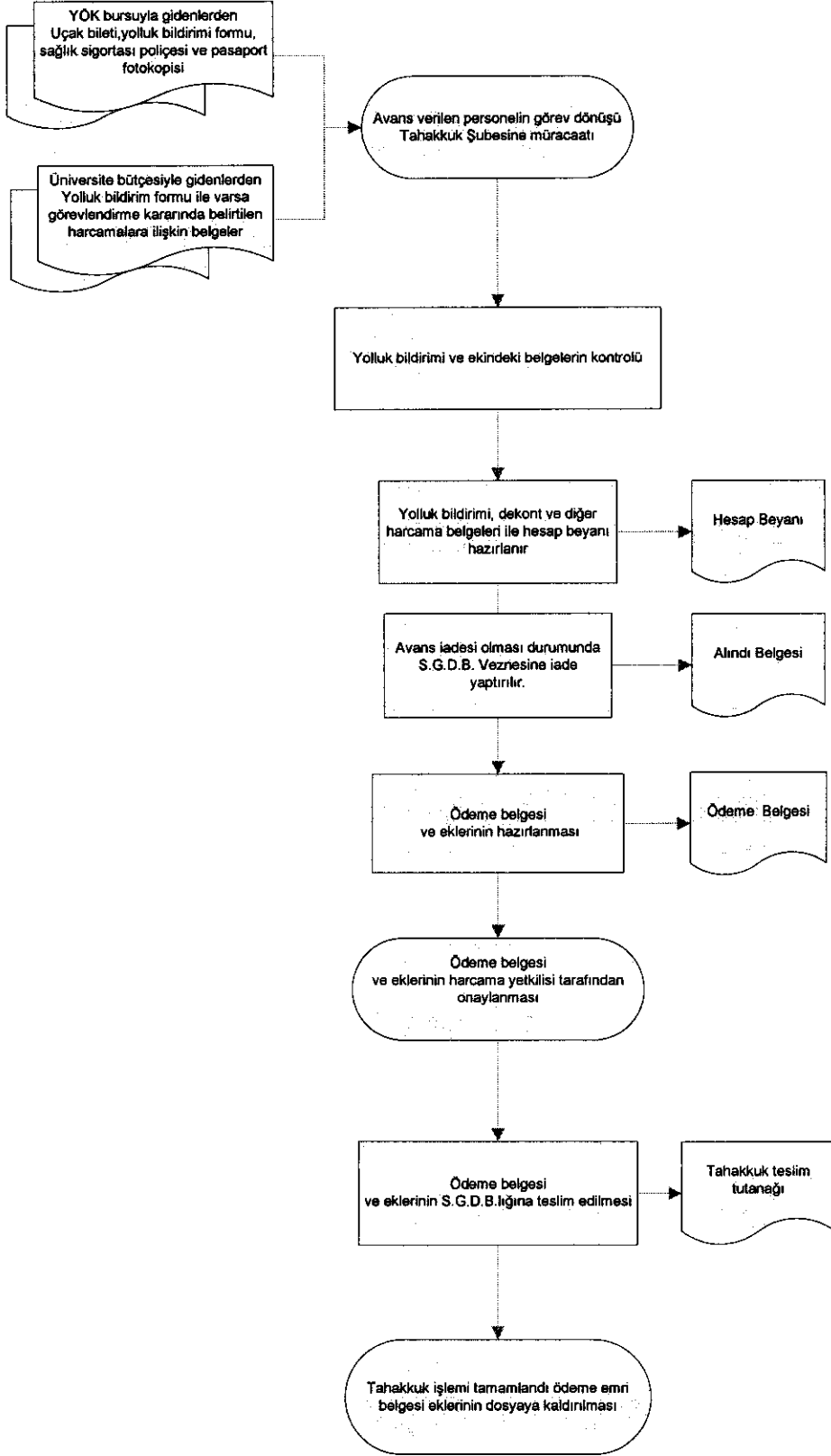
8.

ANKARA ÜNİVERSİTESİ PERSONEL DAİRE BAŞKANLIĞI
YURT İÇİ SÜREKLİ YOLLUK İŞLEMLERİ

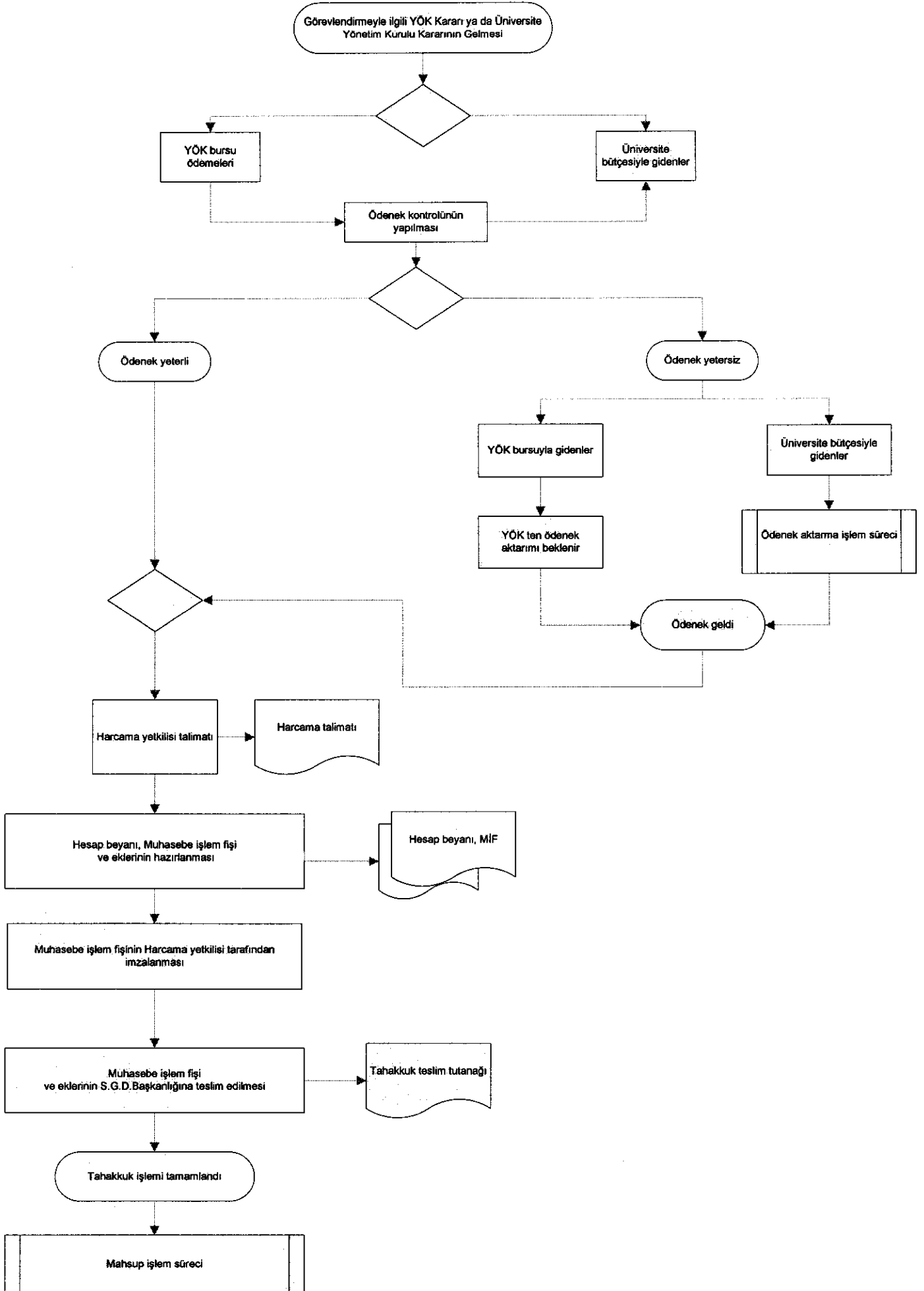


8

ANKARA ÜNİVERSİTESİ PERSONEL DAİRE BAŞKANLIĞI
YURT DIŞI HARCIRAH MAHSUP İŞLEMLERİ

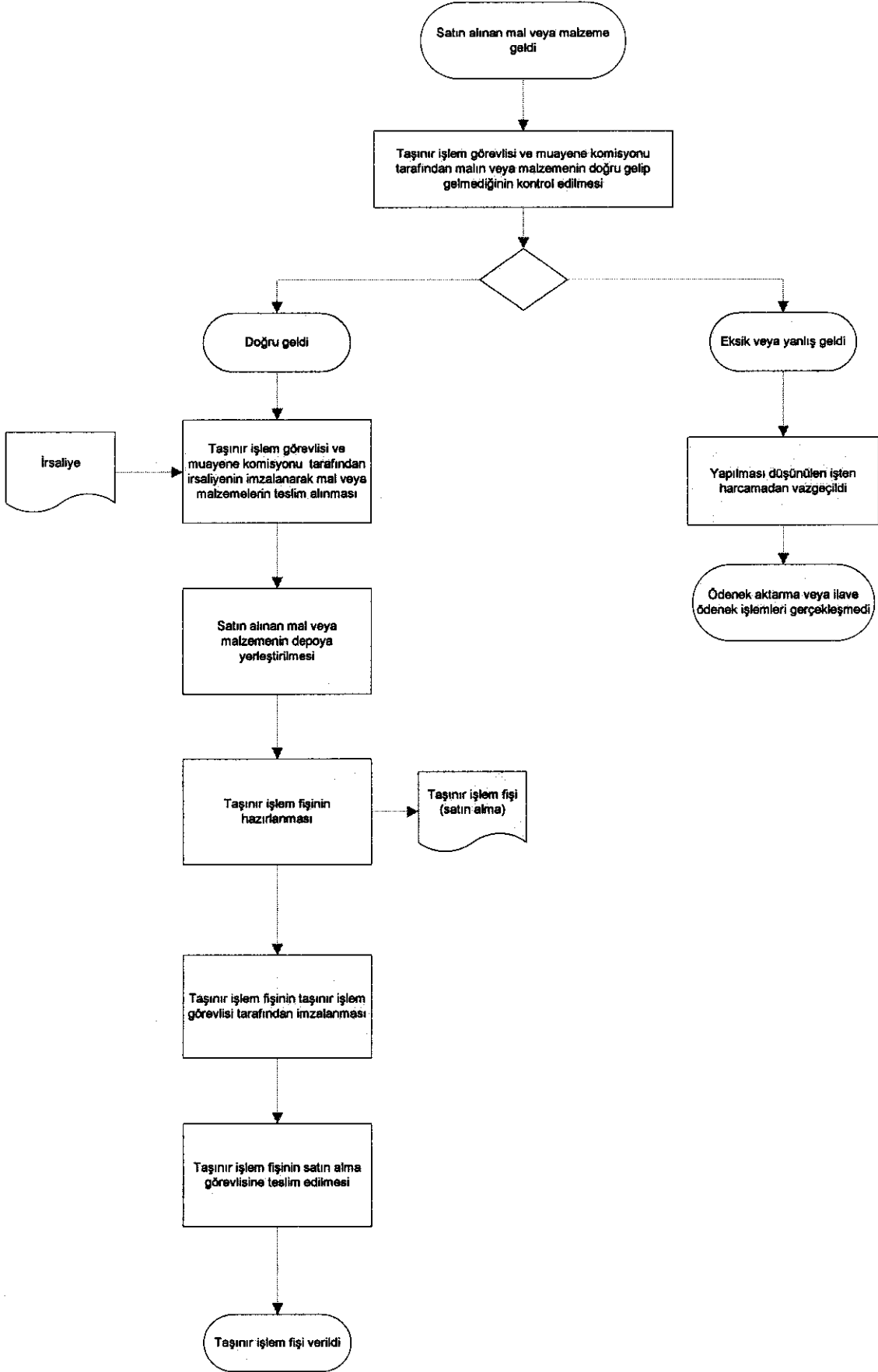


ANKARA ÜNİVERSİTESİ PERSONEL DAİRE BAŞKANLIĞI
YURT DIŞI HARCIRAH AVANS İŞLEMLERİ



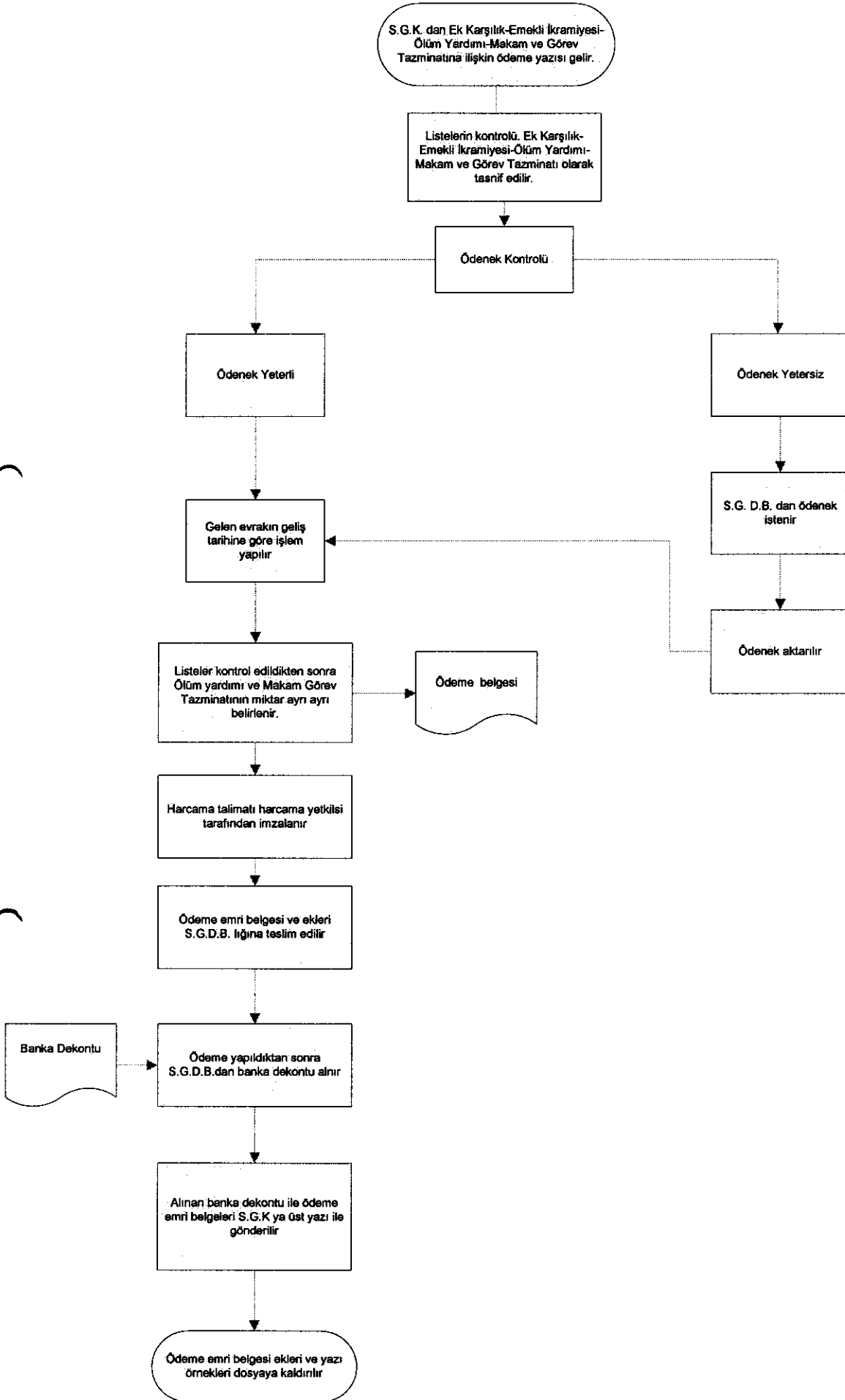
2

ANKARA ÜNİVERSİTESİ PERSONEL DAİRE BAŞKANLIĞI
TAŞINIR MAL VEYA MALZEMENİN TESLİM ALINMASI SÜRECİ İŞ AKIŞ ŞEMASI



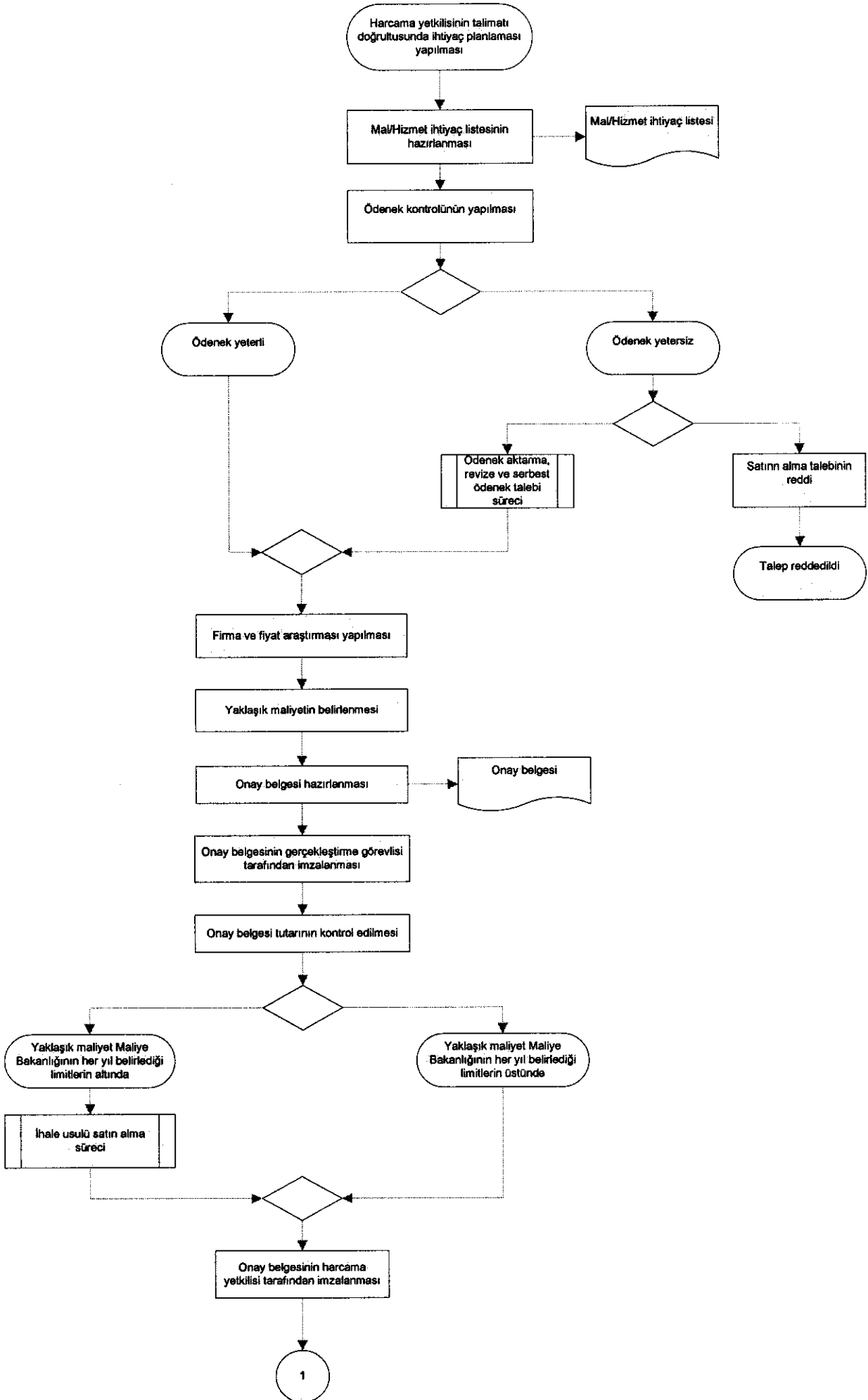
Ş.

ANKARA ÜNİVERSİTESİ PERSONEL DAİRE BAŞKANLIĞI
SOSYAL GÜVENLİK KURUMU ÖDEMELERİ İŞ AKIŞ ŞEMASI



Handwritten signature or mark.

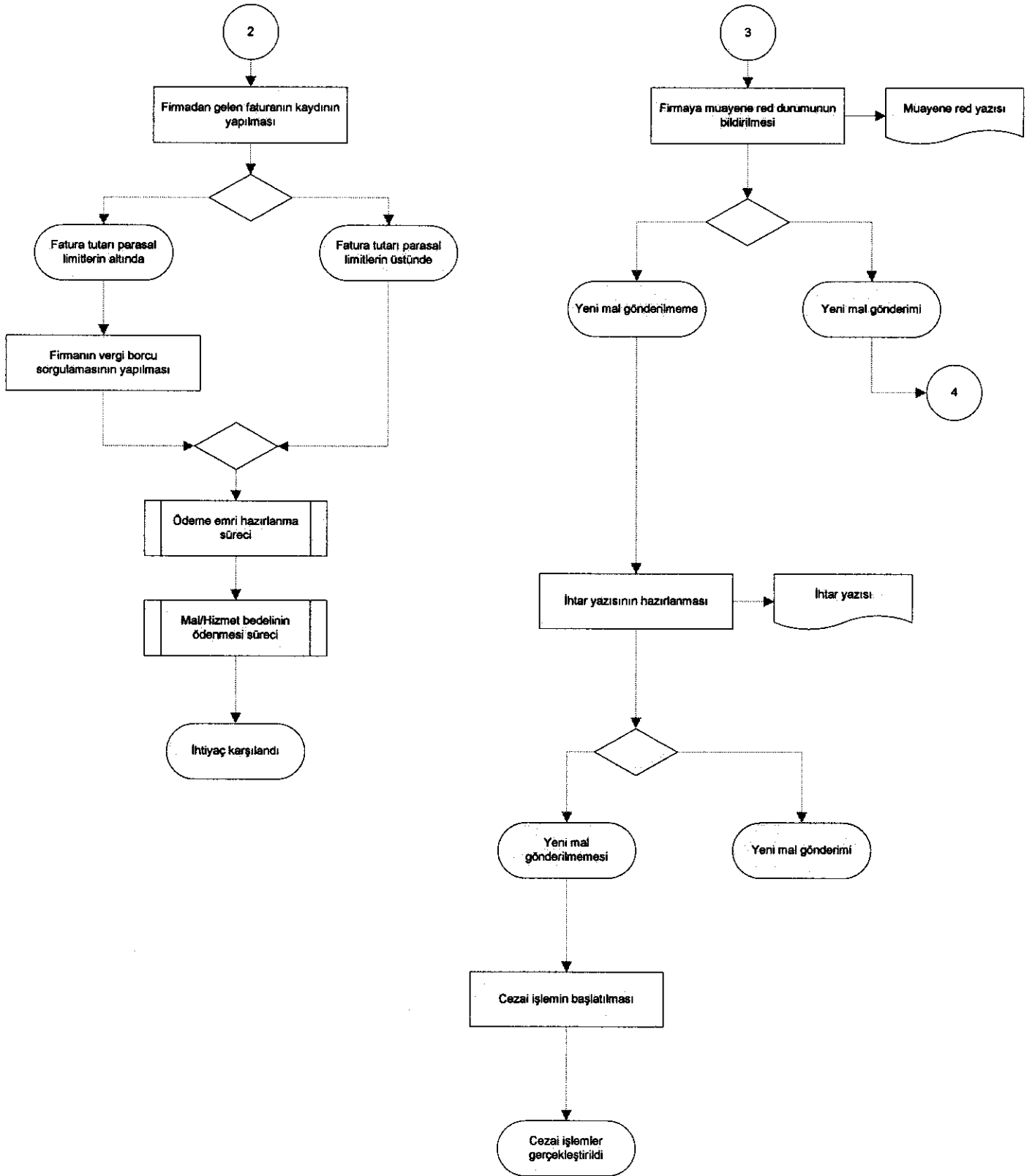
ANKARA ÜNİVERSİTESİ PERSONEL DAİRE BAŞKANLIĞI
SATIN ALMA SÜRECİ (Doğrudan Temin)



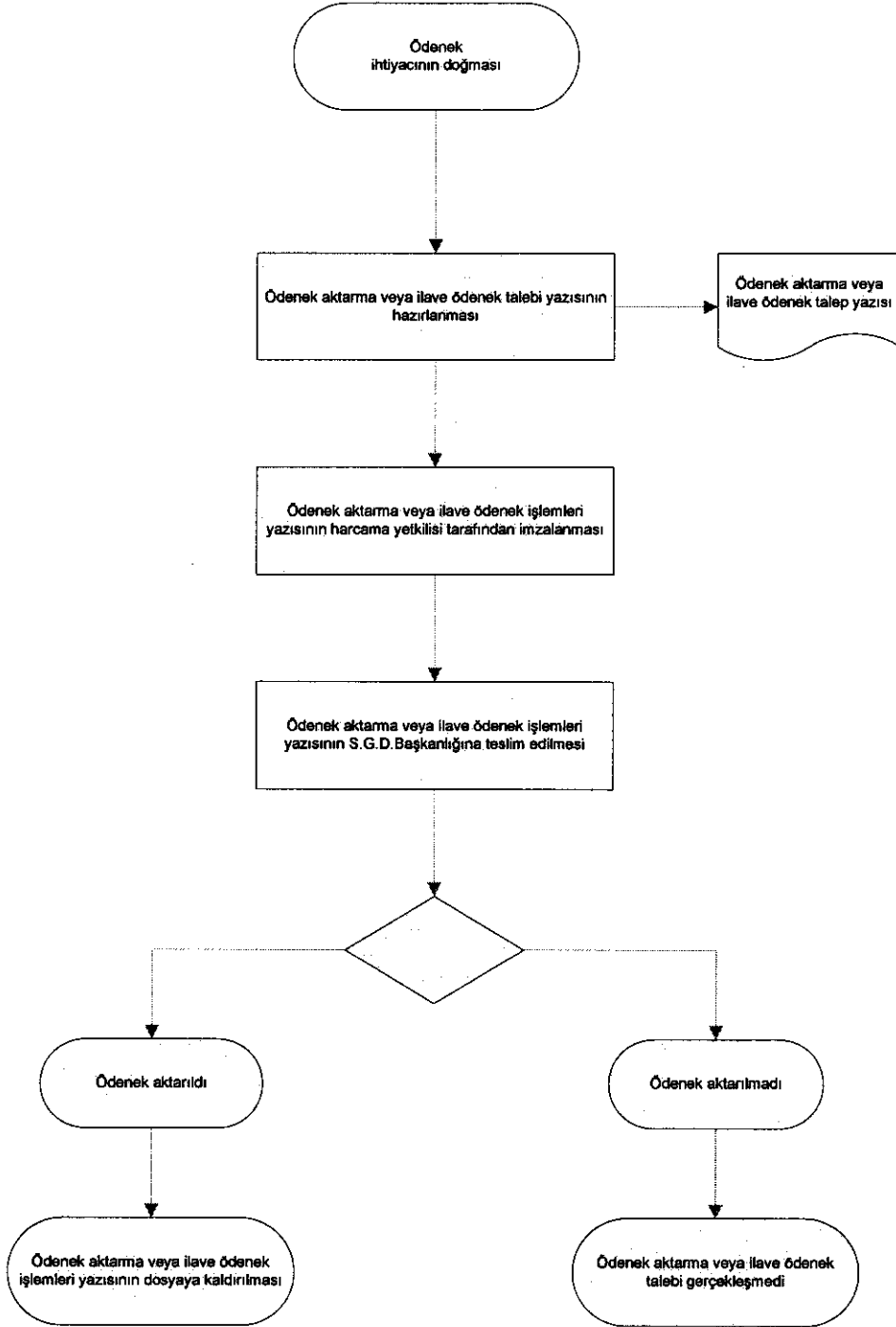
ANKARA ÜNİVERSİTESİ PERSONEL DAİRE BAŞKANLIĞI
SATIN ALMA SÜRECİ (Doğrudan Temin)



ANKARA ÜNİVERSİTESİ PERSONEL DAİRE BAŞKANLIĞI
SATIN ALMA SÜRECİ (Doğrudan Temin)

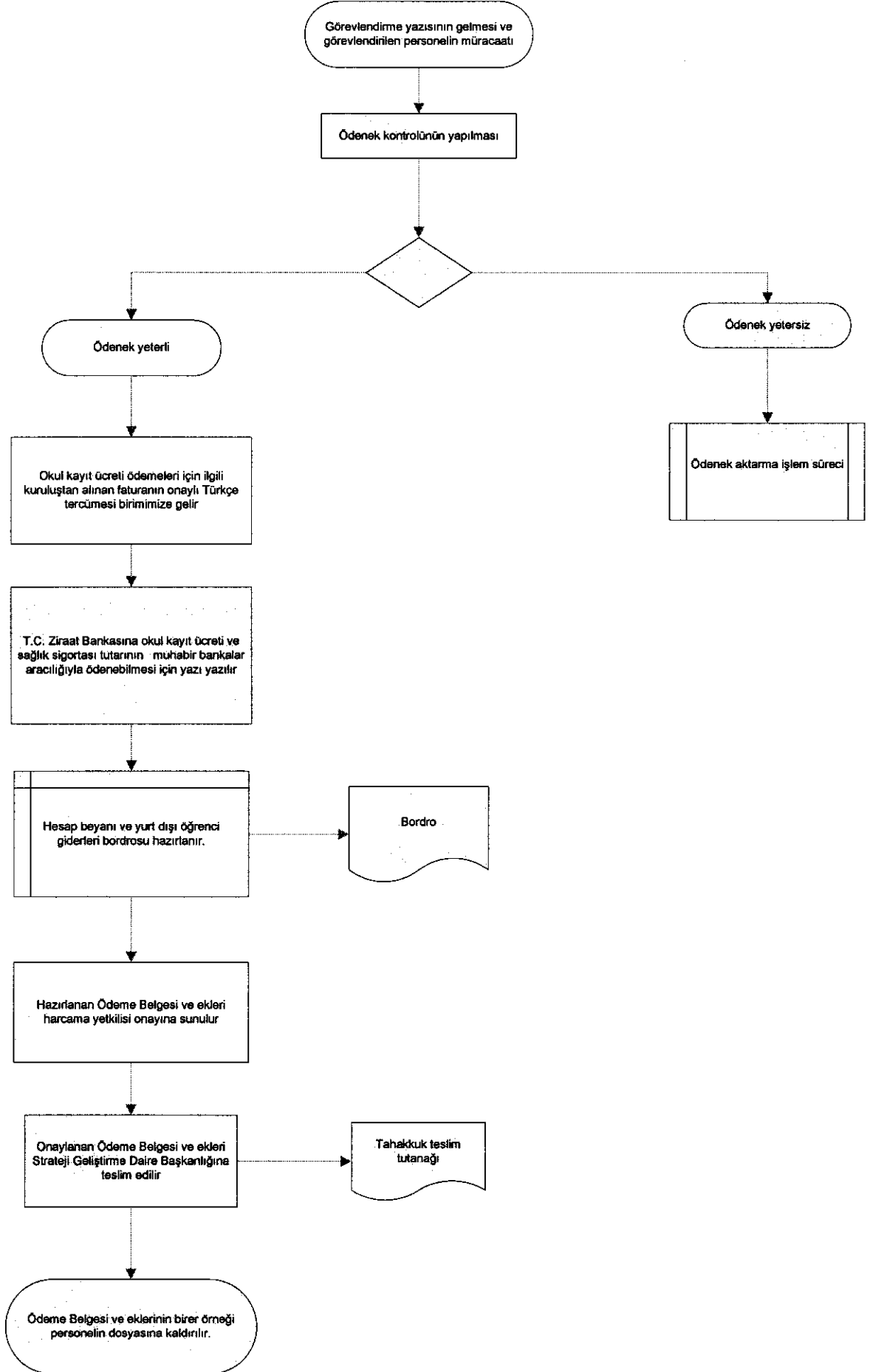


ANKARA ÜNİVERSİTESİ PERSONEL DAİRE BAŞKANLIĞI
ÖDENEK TALEBİ İŞLEMLERİ İŞ AKIŞ ŞEMASI

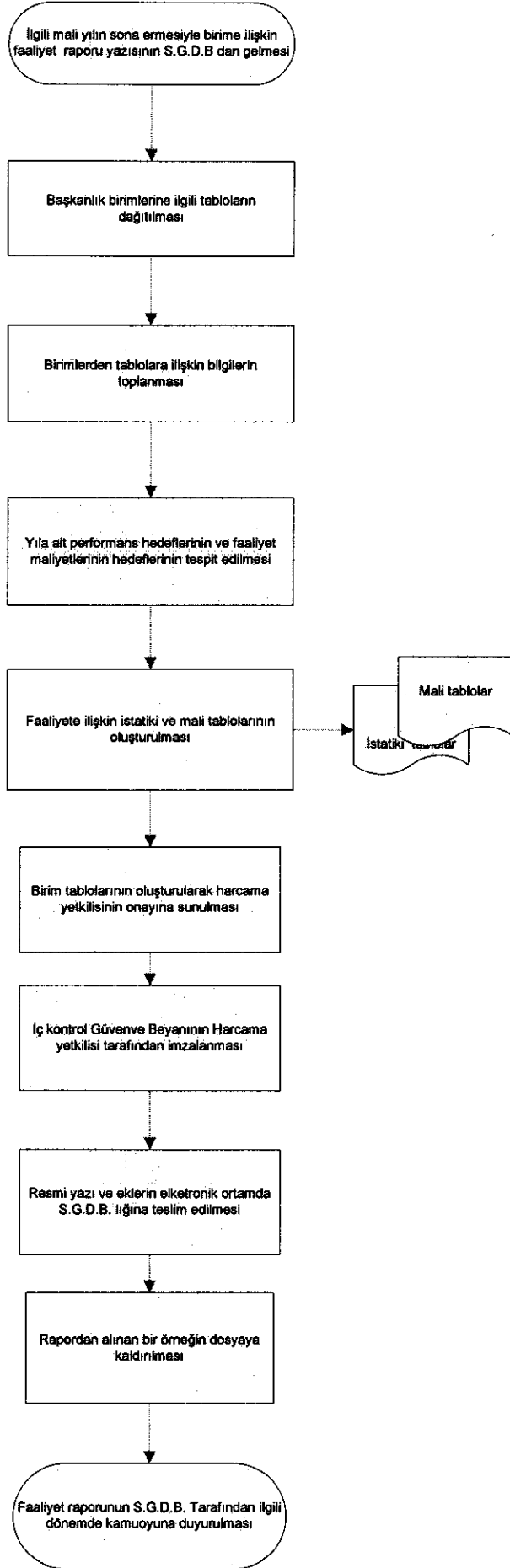


2.

ANKARA ÜNİVERSİTESİ PERSONEL DAİRE BAŞKANLIĞI
2547 SAYILI KANUNUN 33. MADDESİ UYARINCA YURT DIŞINDA GÖREVLENDİRİLEN ÖĞRETİM ELEMANLARINA
YAPILAN ÖDEMELERE AİT İŞ AKIŞ ŞEMASI (Okul Kayıt Ücreti, Sağlık Sigortası vb Ödemeler)

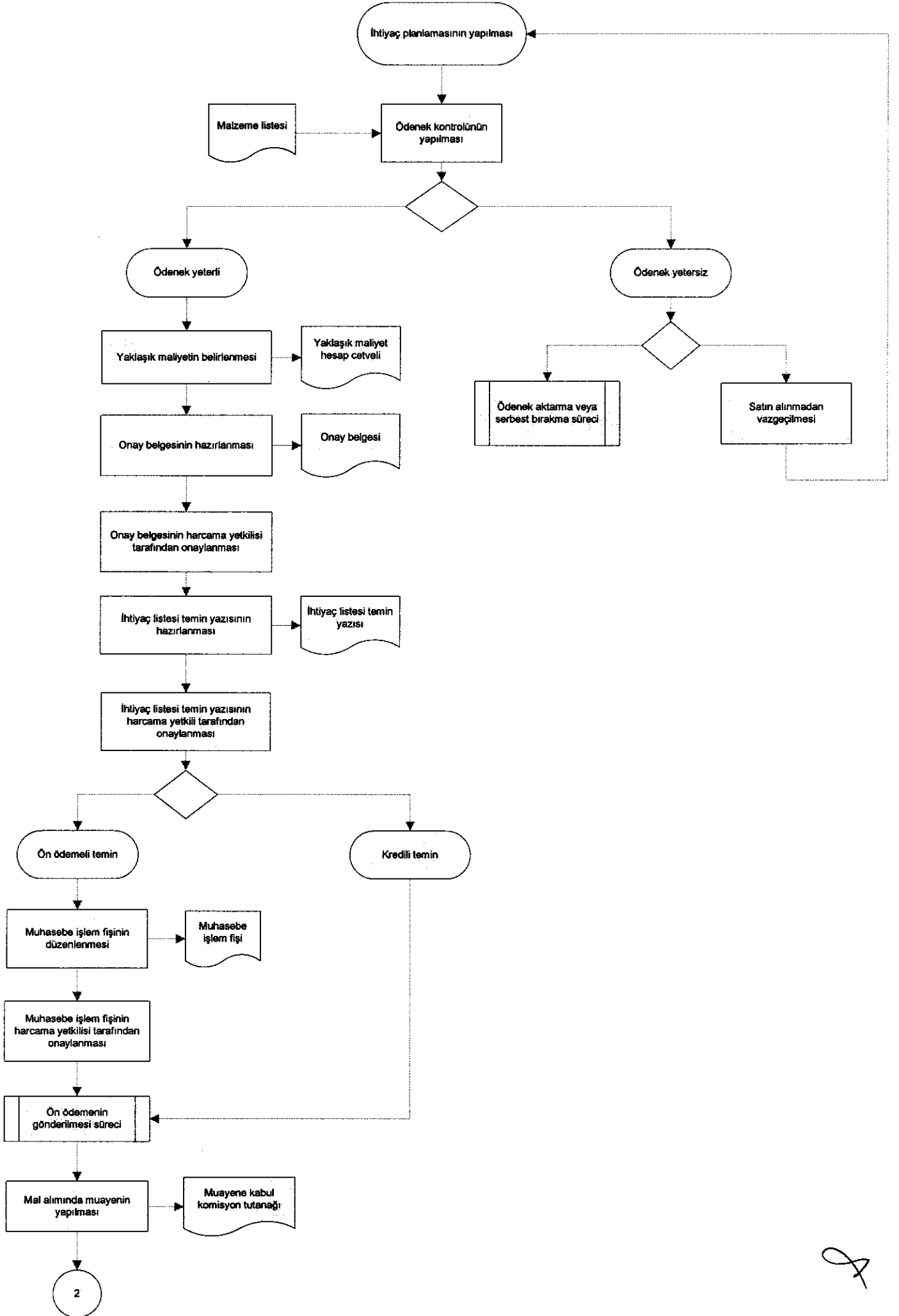


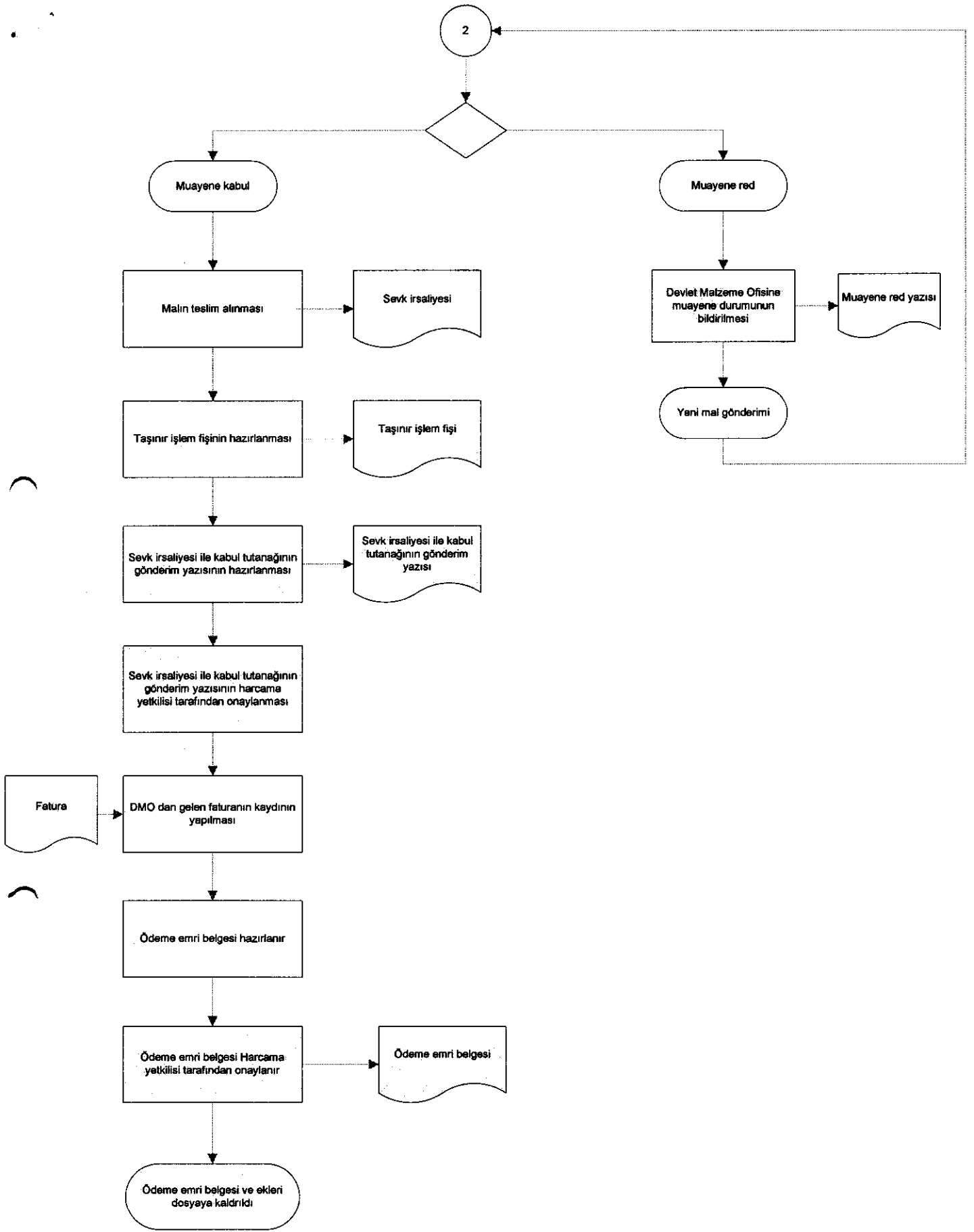
ANKARA ÜNİVERSİTESİ PERSONEL DAİRE BAŞKANLIĞI
İDARE FAALİYET RAPORU İŞ AKIŞ ŞEMASI



2

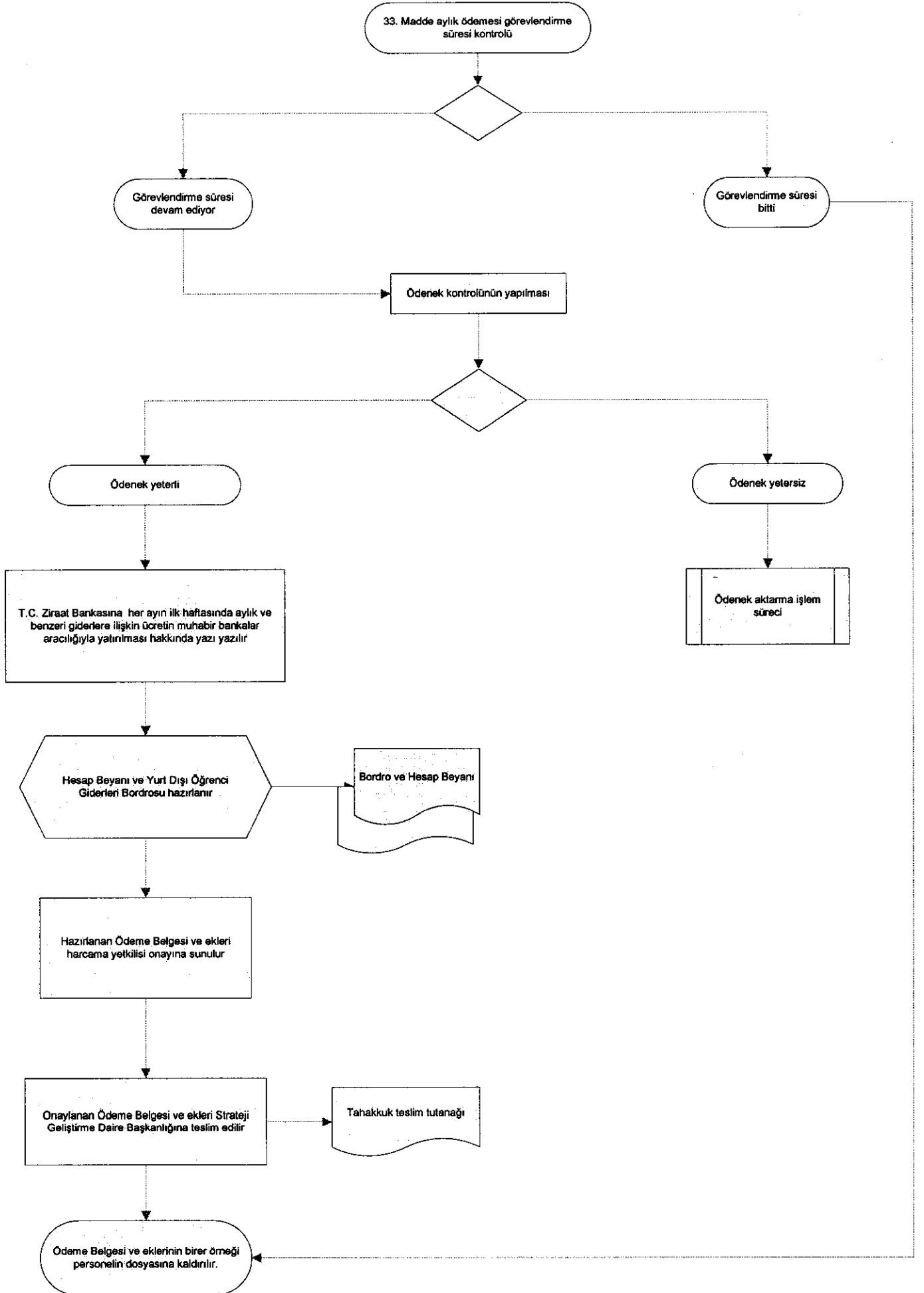
ANKARA ÜNİVERSİTESİ PERSONEL DAİRE BAŞKANLIĞI
DEVLET MALZEME OFİSİ TEMİN SÜRECİ İŞ AKIŞ ŞEMASI



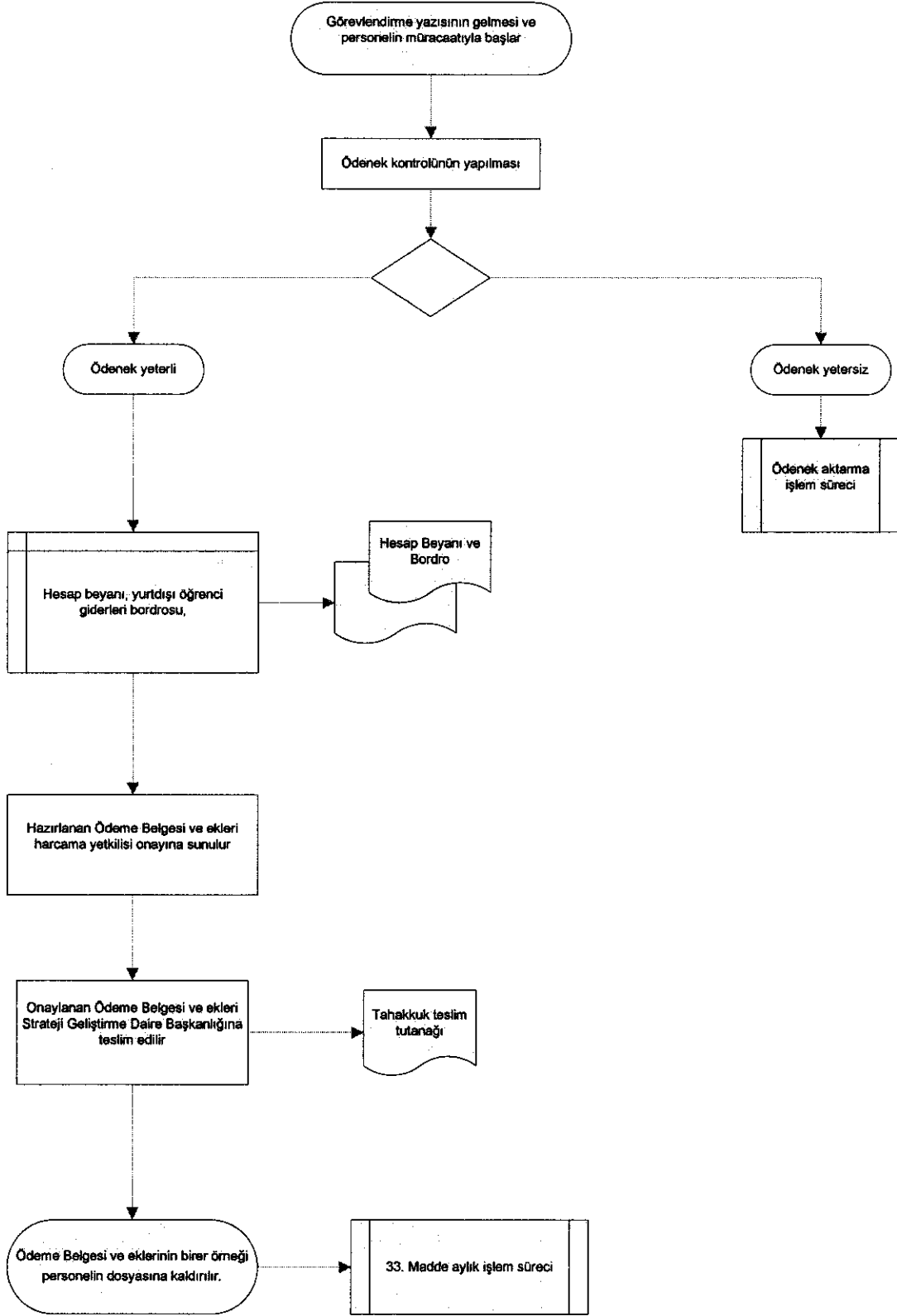


8

ANKARA ÜNİVERSİTESİ PERSONEL DAİRE BAŞKANLIĞI
2547 SAYILI KANUNUN 33. MADDESİ UYARINCA YURT DIŞINDA GÖREVLENDİRİLEN ÖĞRETİM
ELEMENLARINA YAPILAN ÖDEMELERE AİT İŞ AKIŞ ŞEMASI (Aylık, Kırtasiye Gideri vb Ödemeler)



ANKARA ÜNİVERSİTESİ PERSONEL DAİRE BAŞKANLIĞI
2547 SAYILI KANUNU 33. MADDESİ UYARINCA YURTDIŞINDA GÖREVLENDİRİLEN ÖĞRETİM
ELEMENLARINA YAPILAN ÖDEMELERE AIT İŞ AKIŞ ŞEMASI (Avans Ödemesi)



9.